



FOR FURTHER INFORMATION PLEASE
CONTACT YOUR LOCAL DEALER.

ALL PLUMBING AND ELECTRICAL WORK TO
BE CARRIED OUT BY A QUALIFIED
TECHNICIAN

The Trouble shooting - Heatmaster Seamless

Starting Sequence Of The Seamless

1. Remote power button pushed.....start signal is sent to the Black Millennium box (you'll hear a "click/dong" noise).
2. Black Millennium box reads the signal and powers up the Blue SIT box.
3. The Blue SIT box starts the exhaust fan (the Black Millennium box and blue SIT box are both operating)
4. The exhaust fan runs for 40 seconds.
5. During this time the pressure switch detects airflow and sends a signal to Blue SIT box.
6. The Blue SIT box runs the exhaust fan for total of 40 seconds to purge, and then for 5 seconds it turns gas on.
7. At the 40 second mark a spark runs from the Blue SIT box to the igniters for Approx. 5 secs to ignite the gas burners.
8. The flame sensor tries to detect a flame for about 2 seconds.
9. When flame is detected, the flame sensor sends a signal back to the Blue Box to continue the gas supply. If flame is not detected it will turn the unit off and start the sequence again.

IMPORTANT When disconnecting and reconnecting parts ensure component boxes at the rear are sealed and all grommets and wiring leads are clear of any damage.

Issue	Cause	Solution
Unit not starting (no spark, flames or fans)	<ol style="list-style-type: none"> 1. No Gas or Supply pressure insufficient 2. No power 3. Igniters and or sensor is shorting out 4. Pressure switch disconnected 	<ul style="list-style-type: none"> • Ensure gas supply connected, purged and pressure appropriate • Turn on isolation switch (ensure power is connected). Check fuse to ensure it has not blown • Clean soot off igniters/sensor and make sure they are running parallel with burner (see below) • Check inside rear of unit to ensure air pressure switch is connected

ALL PLUMBING AND ELECTRICAL WORK TO BE CARRIED OUT BY A QUALIFIED TECHNICIAN

Heatmaster Pty Ltd
 Email: sales@heatmaster.com.au
 Website: www.heatmaster.com.au
 ACN 006 442 717 ABN 64 641 709 587

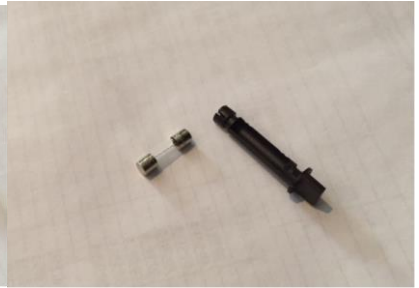
FOR FURTHER INFORMATION PLEASE
CONTACT YOUR LOCAL DEALER.

ALL PLUMBING AND ELECTRICAL WORK TO
BE CARRIED OUT BY A QUALIFIED
TECHNICIAN

The fuse is found at the bottom right hand side of the
unit. The fuse is 1.5AMP

IMPORTANT

**Make sure the isolation switch is turned off before
removing.**



ALL PLUMBING AND ELECTRICAL WORK TO BE CARRIED OUT BY A QUALIFIED TECHNICIAN

Heatmaster Pty Ltd

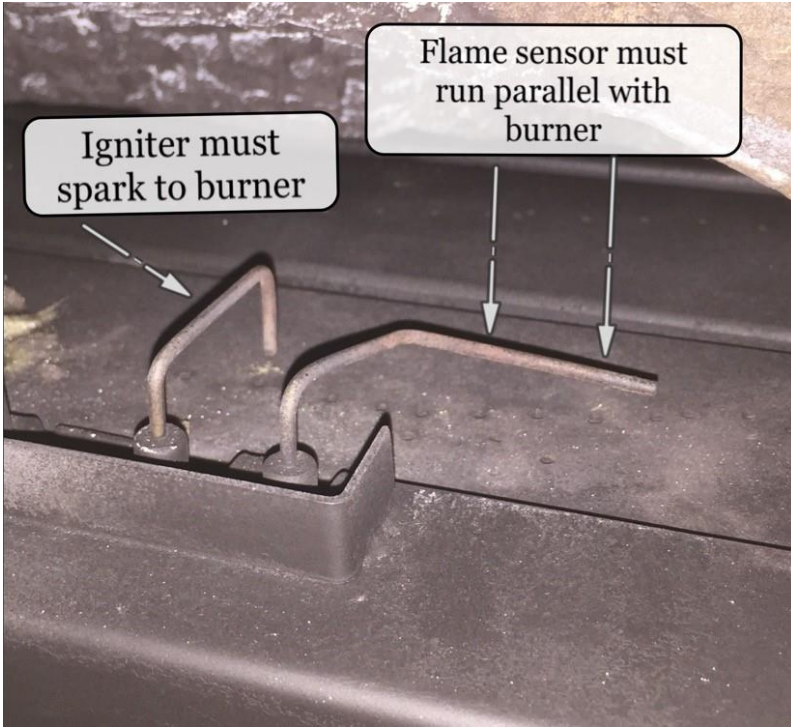
Email: sales@heatmaster.com.au

Website: www.heatmaster.com.au

ACN 006 442 717 ABN 64 641 709 587

FOR FURTHER INFORMATION PLEASE CONTACT YOUR LOCAL DEALER.

ALL PLUMBING AND ELECTRICAL WORK TO BE CARRIED OUT BY A QUALIFIED TECHNICIAN



Ensure the igniter sparks to burner and the flame sensor runs parallel with the burner

If not, This may cause the unit to malfunction

Issue	Cause	Solution
Turning on 1 - 3 sec	<ol style="list-style-type: none"> Soot build up on flame sensor Insufficient power 	<ul style="list-style-type: none"> Clean flame sensor with a dry cloth Make sure no extension cord or power board are being used.

ALL PLUMBING AND ELECTRICAL WORK TO BE CARRIED OUT BY A QUALIFIED TECHNICIAN

FOR FURTHER INFORMATION PLEASE
CONTACT YOUR LOCAL DEALER.

**ALL PLUMBING AND ELECTRICAL WORK TO
BE CARRIED OUT BY A QUALIFIED
TECHNICIAN**



**The sensors should be kept
clear of logs or embers
always!**

They should not be obstructed
in any way.

(see image)

*The flame sensor should sit
approx. 10mm off the burner*

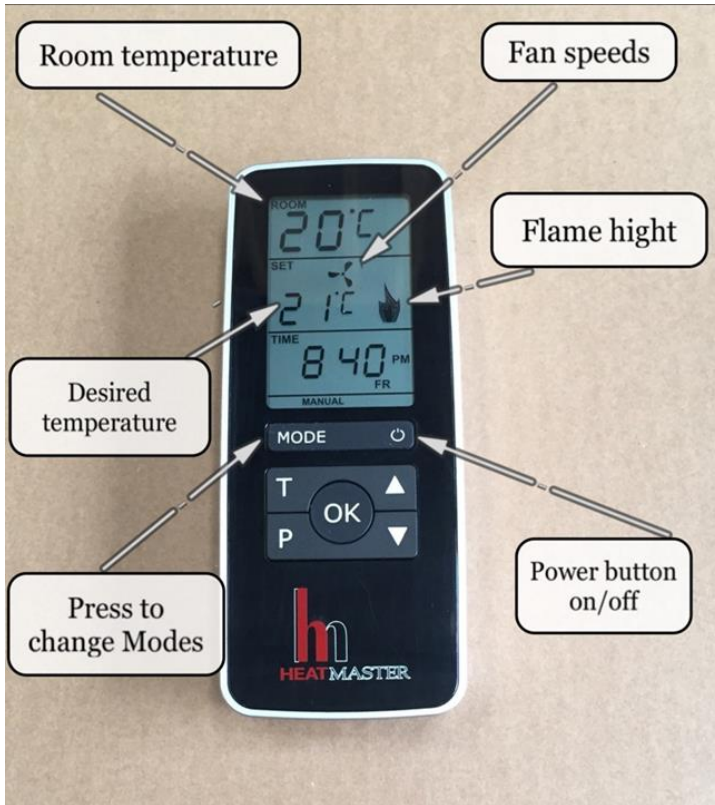
*The igniters should sit approx.
5mm off the burner*

Flame ignites for approx. 5 seconds, then goes out	<ol style="list-style-type: none"> 1. Insufficient air 2. Insufficient gas pressure 	<ul style="list-style-type: none"> • Make sure that air intake flue is not crushed Compressed. • Make sure incoming gas pressure is sufficient and there are no blockages or obstructions.
Turning off after 5-6 min and then turning back on then off again	<ol style="list-style-type: none"> 1. Insufficient air 	<ul style="list-style-type: none"> • Make sure that flue air intake is connected to cowl (may be the case in brick chimney) making sure sufficient clearances are from cowl to eve, ground, side wall
Turning off 20-40 min	<ol style="list-style-type: none"> 1. Unit over heating 	<ul style="list-style-type: none"> • Ensure clearances and air ventilation are as specified. • Damaged temp switch (image below)
Flame turning off by itself	<ol style="list-style-type: none"> 1. Remote is on "Auto" 	<ul style="list-style-type: none"> • Turn remote to manual

ALL PLUMBING AND ELECTRICAL WORK TO BE CARRIED OUT BY A QUALIFIED TECHNICIAN

FOR FURTHER INFORMATION PLEASE CONTACT YOUR LOCAL DEALER.

ALL PLUMBING AND ELECTRICAL WORK TO BE CARRIED OUT BY A QUALIFIED TECHNICIAN



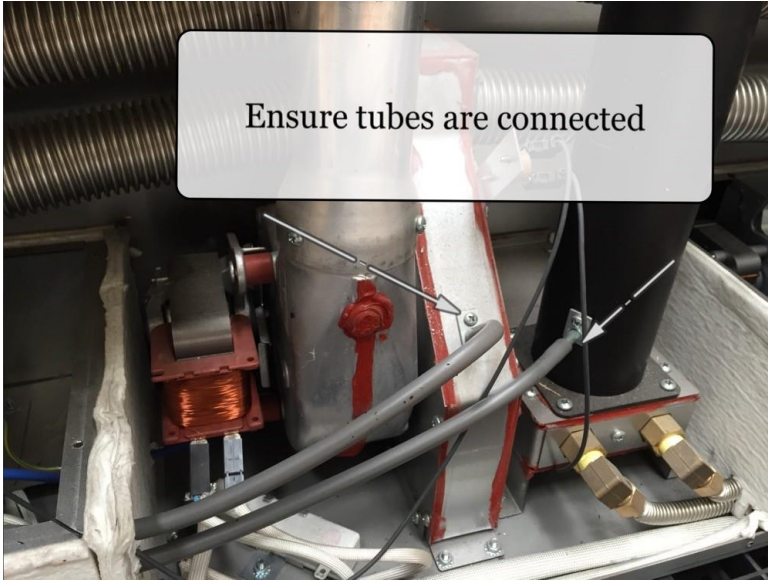
The Seamless remote should only be on “auto” mode if you have programmed the unit to come on and off at specific times
Otherwise it should be on “manual” or preferred setting mode.

Issue	Cause	Solution
Unit not turning on when you have programmed it.	<ol style="list-style-type: none"> 1. Remote on “Manual” 2. Remote power button not turned “on” 	<ul style="list-style-type: none"> • Turn remote to Auto • Turn power button “On”
Unit not sparking.	<ol style="list-style-type: none"> 1 Igniters are shorting out 2 Blockage in fluing 	<p>Check igniter are connected properly.</p> <p>Clean flues and cowl, make sure there is nothing blocking or restricting air intake and exhaust.</p>

ALL PLUMBING AND ELECTRICAL WORK TO BE CARRIED OUT BY A QUALIFIED TECHNICIAN

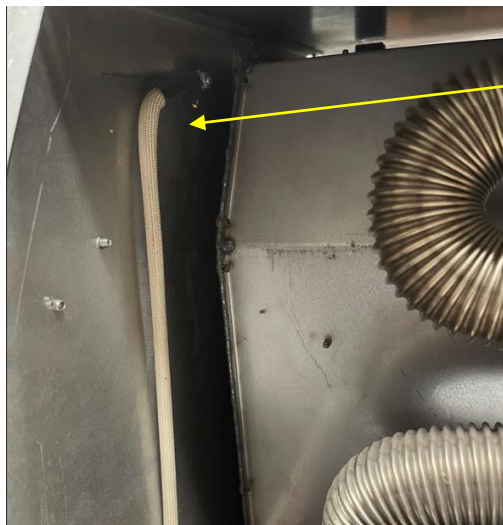
FOR FURTHER INFORMATION PLEASE CONTACT YOUR LOCAL DEALER.

ALL PLUMBING AND ELECTRICAL WORK TO BE CARRIED OUT BY A QUALIFIED TECHNICIAN



When servicing ensure tubes are tightly reconnected.

Issue	Cause	Solution
Fans are running but no spark	1. Faulty pressure switch	<ul style="list-style-type: none"> Check the pressure switch and replace if required
Fans are running but no spark	1. Air tubes are disconnected	<ul style="list-style-type: none"> Ensure air tubes are connected to engage pressure switch



Temp Switch

Looking from the **rear** of the unit the Temp Switch is located on the left hand side panel

ALL PLUMBING AND ELECTRICAL WORK TO BE CARRIED OUT BY A QUALIFIED TECHNICIAN